



## Office of Educator Excellence

# DARTEP Update

## February 3, 2023

SECTION I: Legislative Updates ..... 1

SECTION II: Michigan Department of Education (MDE) Updates ..... 1

SECTION III: Office of Educator Excellence Updates ..... 2

SECTION IV: Resources to Support Preparation Programs ..... 8

SECTION V: Office of Educator Excellence Reminders ..... 8

SECTION VI: Office of Educator Excellence Contacts & Key Resources ..... 10

### **SECTION I: Legislative Updates**

Below is a selection of bills currently before the Michigan Senate and House of Representatives. This selection is limited to *educator workforce related bills* with activity since the [December 2, 2022 DARTEP update](#). **This is a brand-new legislative session, so any bills that were introduced last year, will need to be re-introduced in order to move forward this year.**

Details about the status of all bills, including full text and analysis (where available) may be found at <http://legislature.mi.gov>. At that page, you can also sign up for bill and committee meeting notifications.

#### **Active Bills**

- HB 4038 – modify requirements to serve as a substitute teacher through June 30, 2024. *Referred to Education Committee 1/19/2023.*

### **SECTION II: Michigan Department of Education (MDE) Updates**

Below is a selection of memoranda, news items, and other announcements released by the Michigan Department of Education since the December 2, 2022 DARTEP meeting that OEE believes have special relevance for EPIs and concern issues about which multiple EPI representatives have enquired. Several of these have been previously shared via the DARTEP listserv and are aggregated here for your convenience. To sign up for MDE

emails, please use the following link:

<https://public.govdelivery.com/accounts/MIMDE/subscriber/new>

### **MDE Communications:**

1. [Migrant Student-Turned-Teacher Is Featured in #proudMIeducator Video](#)
2. [Library of Michigan Announces the 2023 Michigan Notable Books](#)
3. [State Superintendent Welcomes New State Board of Education Members](#)
4. [Child Care in Michigan Has Improved Through Historic Investments](#)
5. [Efforts to Address Teacher Shortage Expand with New State Funding](#)
6. [2023-24 USED Teacher Shortage Areas of Loan Forgiveness](#)
7. [Annual Certification Reminder and Requirements](#)

Stay in the know! Review [MDE Press Releases](#) and [MDE Memos](#).

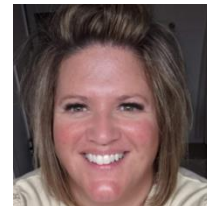
## **SECTION III: Office of Educator Excellence Updates**

### • **New Staff!**

We are excited to welcome Marcie Melton to our team as the Unit Secretary for the Educator Preparation and Data and Accountability Units, Jenni Dickens as the Grow Your Own Consultant for the Recruitment and Retention Unit, and Dante Watson as the Manager for the Recruitment and Retention Unit (he'll be starting on Monday, February 6!).

#### **Marcie Melton**

*Hello, my name is Marcie Melton, and I am the new Administrative Assistant for OEE. I come with 22.5 years' experience in public education supporting educators, administrators, students, and parents. I am married with two adult sons and love my Michigan roots. I enjoy singing, dancing, and laughing. We have a passion for the great outdoors both in the lower half of Michigan on our Harleys but have a great fondness for the upper peninsula boating, hunting and renovating our 1940 log cabin, The Rusted Bus. I am the Chaplain for my local Eagle's rider club and enjoy the volunteer work and support we participate in for our local community. I am so excited to be here and look forward to supporting OEE, the MDE team(s) and the educators of Michigan.*



#### **Jenni Dickens**

*Hello! I'm Jenni Dickens, the new Recruitment and Retention Grow Your Own Consultant in the OEE. I moved back home to Michigan last year after spending a decade in Illinois, where I taught ESL Kindergarten in a small, rural district for several years before transitioning into higher education. I taught ESL methods, worked as a licensure officer, and served as a director of rural*



*educational initiatives in an Educational Studies department at a small liberal arts college. I'm now excited to support students and teachers here in Michigan through this remarkable funding opportunity and with so many good partners across the state. My husband and I live in Lansing with an entitled orange street cat and a small-but-mighty 15-year-old parrot.*

**Dante Watson**

*Dante Watson is the new Recruitment and Retention Manager within the Office of Educator Excellence at the Michigan Department of Education. He is a former classroom instructor, professional learning facilitator, school district minority affairs representative, recruitment and retention representative, and school principal. Dante has his bachelor's and master's degree from The Ohio State University. He received his bachelor's degree in Human Ecology with a specialization in Early Childhood Development, and he earned his master's degree in Education. In addition, Dante earned his K-12 Administration Certificate from Eastern Michigan University. In his downtime, he enjoys watching endless college football on Saturdays with plenty of snacks (fruit included). He also enjoys staying active by practicing yoga, running, and taking long walks in the park with his wife and two dogs (who are extremely spoiled).*



• **Accreditation Support Network**

The Accreditation Support Network continues to meet once a month to provide opportunities for anyone working on accreditation to connect with others, discuss challenges, share ideas, and provide feedback. All are welcome!

Upcoming meeting dates:

- Monday, February 13 10:00 – 11:30 am
- Thursday, March 16 1:00 – 2 :30 pm
- Wednesday, April 26 10:30am – 12:00 pm

Links for these meetings can be found in the [Accreditation Support Folder](#). 2023 meeting dates and links will be sent out by DARTEP. Please reach out to Gina Garner ([GarnerG2@Michigan.gov](mailto:GarnerG2@Michigan.gov)) with any questions.

• **Accreditation Updates**

Stay tuned to the February DARTEP meeting for an important announcement about our spring Accreditation Conference April 12-13!

• **Administrator Program Revision Workshops**

We continue to hold Administrator Program Revision Workshops monthly throughout the program revision period. The next three workshops are on:

- Tuesday, February 14, 3:00 – 4:30 pm
- Friday, March 17, 10:30am – 12:00 pm
- Monday, April 24, 12:30 – 2:00 pm

Links for these workshops as well as for additional dates can be found within the [Administrator Preparation Program Information](#) folder. Please reach out to Gina Garner ([GarnerG2@Michigan.gov](mailto:GarnerG2@Michigan.gov)) if you have any questions.

- **EPI Performance Management System**

OEE continues to collect data for the 2023 EPI Performance Score. Data from the Candidate Suite Surveys and the Administrator Survey have been organized and distributed to providers, the MTTC pass rate calculations have been completed, and the scoring for the diversity of placements has been finalized. Once educator effectiveness scores are available and factored into the overall score, OEE will distribute the 2023 score to providers, likely in late February or early March. Please direct any questions to either Jason Kalmbach ([KalmbachJ@Michigan.gov](mailto:KalmbachJ@Michigan.gov)) or Kate Boswell Gallagher ([BoswellGallagherK@Michigan.gov](mailto:BoswellGallagherK@Michigan.gov)).

- **ESL Endorsements Transition to PK-12: Process Update**

The NS Endorsement Committee has met twice in January to collaborate on the guidelines & resources addendum to the 2017 [NS teacher preparation standards](#). These guidelines are intended to support EPP program faculty with implementation, as such, these are timely as EPPs make necessary program revisions to transition from K-8, 6-12, and K-12 to the PK-12 NS Endorsement. As previously shared, the transition is scheduled to coincide with submission of ***NS Program Full Approval Applications, due on June 30, 2023***. The email with reporting instructions and template will be released March 1, 2023. Considering EPPs are at varied stages of the transition, the PREP unit has planned for proactive support through six NS Program Revision Workshops. The second workshop, scheduled **for February 13<sup>th</sup> at 1:00 – 2:30 pm**, will focus on the required reporting format and explanations of application items for the ESL Program Full Approval. The remaining 90-minute workshops are as follows:

- Friday, March 31, 9:00 – 10:30 am
- Thursday, April 20, 9:00 – 10:30 am
- Tuesday, May 16, 3:00 – 4:30 pm
- Friday, June 9, 3:00 – 4:30 pm

Questions related to the above can be emailed to Dr. Ahlam Alma Bazzi. ([BazziA3@Michigan.gov](mailto:BazziA3@Michigan.gov)).

- **Expedited/Experimental Program Reminder-Not an Alternative Route**

Approved Expedited and Experimental programs are not Alternative Route Programs. Please examine all communications regarding these programs to assure language indicating “alternative route program” is not used to describe them. Alternative route programs result in an Interim Teaching Certificate (ITC). If the program does not

result in an ITC, it is not an alternative route program. Please be sure all candidates and staff involved in these programs know they are not in an alternative route program.

- **Grow Your Own (GYO) Staff Grants**

The application window for GYO Staff grants closed on January 31<sup>st</sup>. The applications will be under review through March, with final notifications likely in April. We issued a special edition of *Educationally Speaking* to provide applicants with common errors and avoid rejected applications. Applicants who submit incomplete applications will receive notifications mid-February, informing them that their applications will not be passed on for competitive review. After competitive review, OEE will notify the applicants after gaining approval for awards. All communications regarding the grants will go to the K-12 representative listed on the application, with the intention to then build a communications list inclusive of EPP partners. To contact the GYO team, email [MDE-PME@Michigan.gov](mailto:MDE-PME@Michigan.gov).

- **MI Future Educator Fellowship & Future Educator Student Teacher Stipend**

The Department of Treasury has begun sending out Fellowship and Stipend payments. They held a webinar on 1/27 with school business officials to go through the nuts and bolts of receiving and disbursing funds to candidates and their programs. Our office continues to receive questions from EPPs and candidates about when they can expect to receive their payments. Remember that all questions about the programs should be directed to the central contact lines at Treasury provided on these Fact Sheets:

- [MI Future Educator Fellowship Fact Sheet](#)
- [MI Future Educator Stipend Fact Sheet](#)

- **Michigan Teacher of the Year**

The 2023-24 Michigan Teacher of the Year application process is in full swing! Applicants advancing to Part B of the process have been notified. Region 6 Teacher of the Year, Ashleigh Lore, along with MTOY Nanette Hanson, will present at the February SBE meeting. Nanette and our Regional Teachers of the Year submit monthly blogs which are featured on the [Meemic Foundation](#) website. Nanette & Dustin Sayers (Region 7) are the most recent. Take a moment to read [Setting Boundaries](#) and [Letter to Future Teachers!](#)

- **MTTC: Health (MI043, MA Endorsement) & Phys. Ed. (MI044, MB Endorsement) Tests Close September 30, 2023**

As a reminder, the [Health \(MI043\)](#) and [Phys. Ed. \(MI044\)](#) MTTC tests will no longer be available to candidates after September 30, 2023. Candidates seeking the MA or MB endorsements must test by September 30. EPIs should check their program closure lists to identify candidates who have not yet passed the test(s) and remind them of the deadline. The Health and Physical Education subtests (MI112 & MI113) for the MC endorsement cannot be used to fulfill the MA or MB testing requirements.

- **MTTC: Higher Education Faculty Needed for Reviews**

MTTC content depends on input from early career teachers, experienced teachers who have supervised student teachers, and higher education faculty who prepare teacher candidates. Committee members are eligible to receive SCECH credits, a stipend from MDE, and substitute reimbursement (paid to the district), as well as travel accommodations for in-person meetings. The following committees will need input from higher education faculty in the coming months:

- Deaf and Hard of Hearing – Standard Setting
- Visual Impairments – Item Review
- Early Childhood General and Special Ed (Birth-Kindergarten) - Standard Setting
- Family & Consumer Science – Practice Test Item Review (3/30 & 4/1, virtual)
- Visual Arts Education – Practice Test Item Review
- BMMT – Practice Test Item Review
- Bias Review Conference – 2/27 & 2/28, virtual)

Apply or nominate your colleagues (including cooperating teachers) here:

- Application: <https://cvent.me/EgAkPP>
- Nomination: <https://cvent.me/9KwYE5>

- **Program Application and Review: Grade Bands**

Program applications received in November 2022 have been assigned to trained review teams. Applications submitted in November should receive preliminary feedback by the end of March. There are two remaining submission windows for MG-HS Professional, ELA, and Math: April 2023 and November 2023. Science will be accepted through April 2024. EPPs with exceptional circumstances may request additional consideration for requesting extensions beyond the scheduled windows. Please contact Darcy McMahon ([McMahonD2@Michigan.gov](mailto:McMahonD2@Michigan.gov)) if you have any questions.

- **Program Revision Workshops**

Program Revision Workshops are offered at least monthly throughout the program revision period. These sessions are your opportunity to connect with MDE consultants and colleagues to discuss questions and ideas about revising programs to meet new standards. Connection information will be sent out prior to each meeting. Notes and questions from previous meetings can be accessed in the [Program Revision Workshop](#) folder. Please reach out to Darcy McMahon ([McMahonD2@Michigan.gov](mailto:McMahonD2@Michigan.gov)) if you have any questions. Below are the upcoming dates:

- Thursday, February 16, 9:00 – 10:30 am
- Thursday, March 9, 1:00 – 2:30 pm
- Wednesday, March 22, 9:00 – 10:30 am
- Thursday, April 6, 11:00 am – 12:30 pm
- Friday, April 21, 10:00 – 11:30 am

- **#ProudMiEducator**

Our newest #proudMiEducator videos featuring [Nanette Hanson](#), 2022-23 Michigan Teacher of the Year, and [Alfredo Aleman](#), third grade teacher at Arcadia Elementary School in Kalamazoo, have been released! Take a moment to view these compelling stories of talented Michigan teachers. A complete playlist of our #proudMiEducator videos can be found on our [#proudMiEducator YouTube channel](#). We are interested in your ideas for #pme videos! If you have an idea or suggestion, please share with Jennifer Robel ([RobelJ@Michigan.gov](mailto:RobelJ@Michigan.gov)).

- **Science Standards and Program Revision Support**

Networking and professional learning will be available for those working on program revision for the new Preparation Standards for Teachers of Middle Grades and High School Science. There will be virtual networking sessions, a symposium on March 3 at MSTA, and NGSX Professional Learning in early May. Please send questions to Darcy McMahon ([McMahonD2@Michigan.gov](mailto:McMahonD2@Michigan.gov)).

- Science Networking Session 2 February 17, 11:00 am – 12:30 pm, FREE, virtual link on flyer
- MSTA Symposium, March 3, 9:00 am – 5:00 pm, Lansing – Registration through MSTA Conference

- **Social Studies Standards Public Comment**

The draft Preparation Standards for Middle Grades and High School Teachers of Social Studies will be introduced to the Michigan State Board of Education on February 14, 2023. Following that introduction, there will be a period of public comment. Please watch for the announcement of public comment and disseminate widely to ensure a broad range of participation.

- **Surveys**

Survey links were distributed November 16 and will remain available through February 12, 2023. Approximate response rates as of mid-January are:

Teacher Candidate: 84%

Candidate Supervisor: 92%

Cooperating Teacher: 66%

Rosters for the Spring/Summer 2023 edition of the surveys were collected in December and January. Survey invitations will be distributed March 15 and remain valid through June 11.

Please contact Dana Utterback ([UtterbackD@Michigan.gov](mailto:UtterbackD@Michigan.gov)) if you need to revise your rosters as the survey distribution date approaches.

As a reminder, providers can review the list of respondents who have completed a survey on the Qualtrics dashboard. MDE encourages programs to reach out and remind missing respondents to complete the survey by the deadline as response rate

is now included within the performance score. If you any have questions, please contact Jason Kalmbach ([KalmbachJ@Michigan.gov](mailto:KalmbachJ@Michigan.gov)) and Dana Utterback ([UtterbackD@Michigan.gov](mailto:UtterbackD@Michigan.gov)).

- **Title II**

Pearson/ES is in the process of collecting rosters from providers in order to prepare MTTC data for Title II. The "Data Collection Worksheet" is **due February 3**, although earlier submissions are encouraged in case providers and Pearson need to investigate specific cases. Title II reporting should be back it its normal schedule this year, with the website opening for submissions in March/April 2023. MDE has not yet been informed of a specific opening date. EPPs can contact the Title II help desk directly at [Title2@rti.org](mailto:Title2@rti.org) or via phone at 866-214-2038. If you have any questions, please contact Jason Kalmbach ([KalmbachJ@Michigan.gov](mailto:KalmbachJ@Michigan.gov)) and Kate Boswell Gallagher ([BoswellGallagherK@Michigan.gov](mailto:BoswellGallagherK@Michigan.gov)).

## ***SECTION IV: Resources to Support Preparation Programs***

- **From October MDE Update: Grow Your Own Program Development Resources**  
[\*Define, Identify, and Fund Nontraditional Pathways into the Teaching Profession: A Resource for Michigan Districts\*](#) provides key considerations for developing a GYO program and descriptions of exemplary programs. [\*Grow Your Own Educators: A Toolkit for Program Design and Development\*](#) also provides a collection of user-friendly resources on essential elements of high quality GYO programs.

## ***SECTION V: Office of Educator Excellence Reminders***

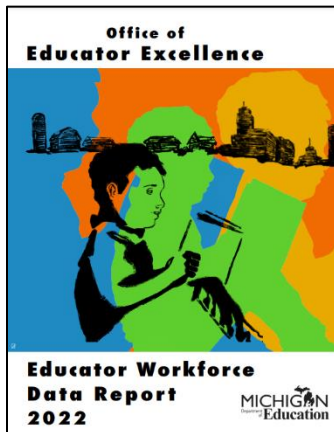
- **2021-22 MDE Annual Report**



MDE's [2021-22 Annual Report](#), highlighting progress toward achieving Michigan's Top 10 Strategic Education Plan goals, was released on September 30. This report is available on MDE's webpage dedicated to [Michigan's Top 10 Strategic Education Plan](#), along with [previous years' reports](#).

- **2022 Educator Workforce Data Report**





The Office of Educator Excellence (OEE) has released the [2022 Educator Workforce Data Report](#). This annual report includes commonly requested data about the educator pipeline. This report is updated and expanded annually to increase transparency and provide accessible information for interested parties about the education preparation and staffing system. This report is available on our [Educator Workforce Research](#) page, along with [previous years' reports](#). If you have questions, please contact Kate Boswell Gallagher ([BoswellGallagherK@Michigan.gov](mailto:BoswellGallagherK@Michigan.gov)).

- **"Educationally Speaking," the OEE Newsletter**

Subscribe to the OEE's newsletter, "Educationally Speaking," to receive the most up-to-date information from our office. Visit [MDE's Email Updates](#) webpage, enter your email address, then scroll down to Educator Excellence and check the box next to "Educationally Speaking."

- **Volunteer with OEE Initiatives**

We need your input! We can't do this work without you! We Need Your Voice! If you are interested in sharing your perspective with the Office of Educator Excellence on a future project, we are always looking for individuals to participate in workgroups, review committees, and other projects involving Michigan's education workforce. To be considered, please complete [this form](#). Feel free to forward to others!

## **SECTION VI: Office of Educator Excellence Contacts & Key Resources**

<b>How may we help you?</b>	<b>Contact</b>
Appropriate Placement	Braydin Walters ( <a href="mailto:waltersb2@Michigan.gov">waltersb2@Michigan.gov</a> )
CAEP Accreditation	Gina Garner ( <a href="mailto:GarnerG2@Michigan.gov">GarnerG2@Michigan.gov</a> )
Certificate Corrections	Dana Utterback ( <a href="mailto:UtterbackD@Michigan.gov">UtterbackD@Michigan.gov</a> )
Certification Rules & Policy	Krista Ried ( <a href="mailto:RiedK@Michigan.gov">RiedK@Michigan.gov</a> )
Change EPI Contact/Staff Information	Educator Programs Inbox ( <a href="mailto:EducatorPrograms@Michigan.gov">EducatorPrograms@Michigan.gov</a> )
CPR/First Aid	Beatrice Harrison ( <a href="mailto:HarrisonB@Michigan.gov">HarrisonB@Michigan.gov</a> )
Criminal Convictions Questions	Professional Practices Inbox ( <a href="mailto:MDE-Professional-Practice@Michigan.gov">MDE-Professional-Practice@Michigan.gov</a> )
DARTEP Listserv	DARTEP Website ( <a href="https://darTEP.org/listserv/index.php">https://darTEP.org/listserv/index.php</a> )
Data Requests	Kate Boswell Gallagher ( <a href="mailto:BoswellGallagherK@Michigan.gov">BoswellGallagherK@Michigan.gov</a> )
Educator Evaluations	Ann Green ( <a href="mailto:GreenA18@Michigan.gov">GreenA18@Michigan.gov</a> )
EPI Performance Score	Joe Priest ( <a href="mailto:PriestJ4@Michigan.gov">PriestJ4@Michigan.gov</a> )
Future Proud Michigan Educator: EXPLORE	Jason Kalmbach ( <a href="mailto:KalmbachJ@Michigan.gov">KalmbachJ@Michigan.gov</a> )
Future Proud Michigan Education: GYO	Kate Boswell Gallagher ( <a href="mailto:BoswellGallagherK@Michigan.gov">BoswellGallagherK@Michigan.gov</a> )
MOECS – EPI Users	Holly Carruthers ( <a href="mailto:CarruthersH@Michigan.gov">CarruthersH@Michigan.gov</a> )
MOECS – Applicants	Jennifer Dickens ( <a href="mailto:DickensJ2@Michigan.gov">DickensJ2@Michigan.gov</a> )
MTTC Information	Dana Utterback ( <a href="mailto:UtterbackD@Michigan.gov">UtterbackD@Michigan.gov</a> )
Obtain Program Applications & Forms	MOECS Helpdesk: 517-241-5000 or ( <a href="mailto:MDE-EducatorHelp@Michigan.gov">MDE-EducatorHelp@Michigan.gov</a> )
Preparation Program Technical Assistance: General Education	Bridgett McDowell ( <a href="mailto:McDowellB@Michigan.gov">McDowellB@Michigan.gov</a> )
Preparation Program Technical Assistance: Administrator, Alternative Routes (Administrator, Special Education), Arts, Early Childhood, School Counselor, School Psychologist, School Social Worker, Special Education, Special Education Experimental, Teacher Leader	Educator Programs Inbox ( <a href="mailto:EducatorPrograms@Michigan.gov">EducatorPrograms@Michigan.gov</a> )
Preparation Program Technical Assistance: ESL/Bilingual Education,	Sean Kottke ( <a href="mailto:KottkeS@Michigan.gov">KottkeS@Michigan.gov</a> )
	Gina Garner ( <a href="mailto:GarnerG2@Michigan.gov">GarnerG2@Michigan.gov</a> )
	Ahlam Bazzi ( <a href="mailto:BazziA3@Michigan.gov">BazziA3@Michigan.gov</a> )

World Language, Elementary Education, English Language Arts, Literacy, Reading Diagnostics, Reading Teacher/Specialist	
Preparation Program Technical Assistance: Alternative Routes (Teacher), Career & Technical Education, Elementary Education, Health/PE, Math, Science, Social Studies	Darcy McMahon ( <a href="mailto:McMahonD2@Michigan.gov">McMahonD2@Michigan.gov</a> )
Professional Learning	Marty Snitgen ( <a href="mailto:SnitgenM1@Michigan.gov">SnitgenM1@Michigan.gov</a> )
Public Directory (ProPrep) Corrections	Dana Utterback ( <a href="mailto:UtterbackD@Michigan.gov">UtterbackD@Michigan.gov</a> )
Recruitment & Retention Programs	Dante Watson (email to come!)
Recognition Programs	Jennifer Robel ( <a href="mailto:RobelJ@Michigan.gov">RobelJ@Michigan.gov</a> )
Surveys	Dana Utterback ( <a href="mailto:UtterbackD@Michigan.gov">UtterbackD@Michigan.gov</a> )
	Kate Boswell Gallagher ( <a href="mailto:BoswellGallagherK@Michigan.gov">BoswellGallagherK@Michigan.gov</a> )
Title II Reporting	Jason Kalmbach ( <a href="mailto:KalmbachJ@Michigan.gov">KalmbachJ@Michigan.gov</a> ) Vendor: <a href="mailto:title2@rti.org">title2@rti.org</a>

### **Key Resources**

1. [2022 Education Workforce Data Report](#)
2. [Certification Guidance](#)
3. [Clinical Experiences Requirements](#)
4. [Code of Educational Ethics and Resources](#)
5. [Core Teaching Practices](#)
6. [Do You Want to Teach in Michigan?](#)
7. [Educator Evaluation and Professional Growth Webinars](#)
8. [Information for Educator Preparation Providers](#)
9. [Educator Workforce Research and Annual Educator Workforce Data Reports](#)
10. [MDE Directory](#)
11. [MI Educator Information](#)
12. [Michigan's Top 10 Strategic Education Plan](#)
13. [Preparation Standards for all Endorsement Areas](#)
14. [Renewing Your Educator Certificate Online](#)
15. [Superintendent's Workforce Guide](#)
16. [Teacher Certification Code](#)
17. [www.MichiganTeacher.org](http://www.MichiganTeacher.org)